

## Hazard Warnings

Hazard warnings in this manual indicate potential harm to the user or the product. For the person interacting with the product, the level of risk includes consequences ranging from slight, up to lethal injuries. As for the product, disobeying the warnings may cause damage to the equipment and/or void the warranty. Therefore, said warnings are made apparent to instruct and warn the user, which precautions have to be made prior to performing any actions described in this manual. The user must read and be familiar with the manual, before performing any tasks as described in this manual.

Hazard warnings in this manual are presented in these three forms:

**WARNING:** These warning notices refer to personal safety. Failure to obey these notices could result in personal injury or death.



**WARNING**

**CAUTION:** General precautions must be made. Failure to obey these notices could result in personal injury and/or equipment damage.



**CAUTION**

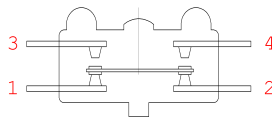
**NOTE:** Directs the user's attention to essential information.

## Datasheet for micro switch 83154

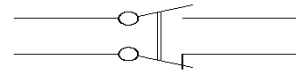
### 1 Principle

The switch is a double-interrupting switch in a reinforced version designed for use in DC.

**WARNING: The two circuits of a microswitch only the same potential can be switched !!!**

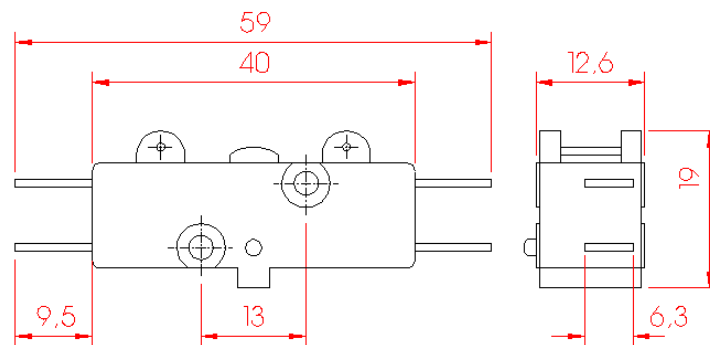


**Figure 1: Principle**



**Figure 2: Circuit symbol**

### 2 Dimensions



**Figure 3: Microswitch 83154**

### 3 Technical data

Mech.Lifetime $L_d$ .....	$10^6$ switching cycles
Zul. ambient temperature .....	-40...+125 °C
Switching capacity (resistive load):	
$I_{nenn}$ bei 250V DC (resistive) .....	5A
$I_{nenn}$ bei 127V DC (resistive) .....	10A
$I_{therm}$ .....	17,5A